

Introduction

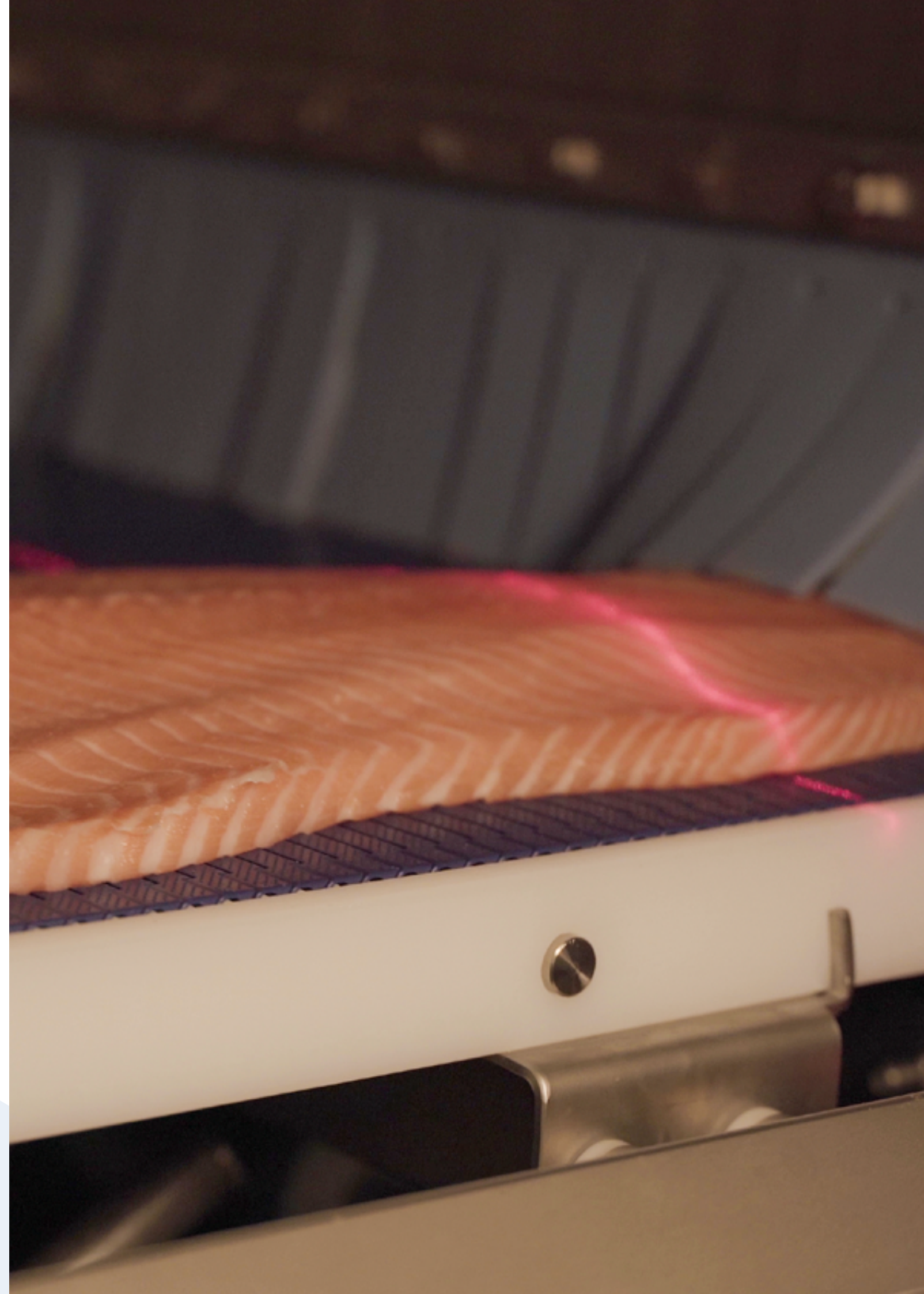
When MARELEC launched its first PORTIO back in 2008, it answered a growing demand in the food-processing market. The machine was first introduced for fish processing, but soon after, the three-camera version was developed for the meat industry. This was the start of a successful product line that quickly developed into dedicated versions that would soon be used worldwide in all segments of the fish, meat and poultry processing industries.

In 2023, Duravant, a worldwide supplier of custom equipment and automation solutions for the food processing, packaging and material handling industries, acquired MARELEC Food Technologies. Leveraging its expertise in engineering, integration, project management and operational excellence, Duravant delivers comprehensive process solutions to customers and collaborators through its extensive global sales, distribution and service networks. Duravant's market-leading trademarks are known for their innovation, durability and reliability, aligning seamlessly with MARELEC's values.

Today, we are proud to present a complete range of intelligent portion cutters including the waterjet. All models have been created with a customer-centric focus and are built using the extensive expertise we have gained in food processing since the early nineties.

We kindly invite you to browse through our brochure to find out more about the different PORTIOJET models, applications and our unique selling points. Our sales team is ready to answer any questions you may have.

Regardless of which PORTIO you need, choosing MARELEC - a worldwide leader in this technology - will ensure that you are working with a service-oriented company, one that listens to your specific needs and is a flexible partner with a human approach. We look forward to a mutually profitable cooperation!



Unique Selling Points

1 // OPTIMIZED YIELD

Combining the latest vision technology with our PORTIO JET optimization software and state-of-the-art nozzles results in the highest possible yields.

2 // FLEXIBLE CUTTING ALGORITHMS

The PORTIO JET optimization software calculates which cuts have priority over others to determine the cutting pattern that results in most value.

3 // UNPARALLELED ACCURACY

The waterjet cutter PORTIO JET uses the latest vision technology, featuring a 200Hz camera that scans products such as salmon fillets or white fish fillets and converts this into a 3D model.

4 // MODULAR DESIGN FOR INCREASED CAPACITY

The base unit of our waterjet cutter consists of one scanning station and two high-pressure cutting stations – this is called the PORTIO JET 2. Depending on customer needs, the PORTIO JET 2 can be extended with additional modules, each with two high-pressure waterjet stations, up to eight cutting stations in total.

5 // USER-FRIENDLY SOFTWARE INTERFACE

Intuitive programming of cutting patterns and fast and easy fine-tuning of the programs results in maximum yields. The cutting pattern is visible on the screen along with an indication of the thickness and the weight of every portion.

6 // EXTREMELY HYGIENIC, EASY TO CLEAN

The waterjet cutter complies with the most stringent hygiene standards. The open structure of the portioning machine allows for the pressure washing and disinfecting of all interior and exterior surfaces. All cabinets with electrics and electronics have a unique drying system to prevent condensation building up, plus our dual sealing concept on all doors.

7 // SERVICE

MARELEC has built a very strong reputation for its after sales service. Our team of service engineers is available 24/7 to reply to your queries. All machines can be connected to the internet, which allows our service team to diagnose the status of the machine from our head office. This enables us to provide you with on-the-spot assistance.



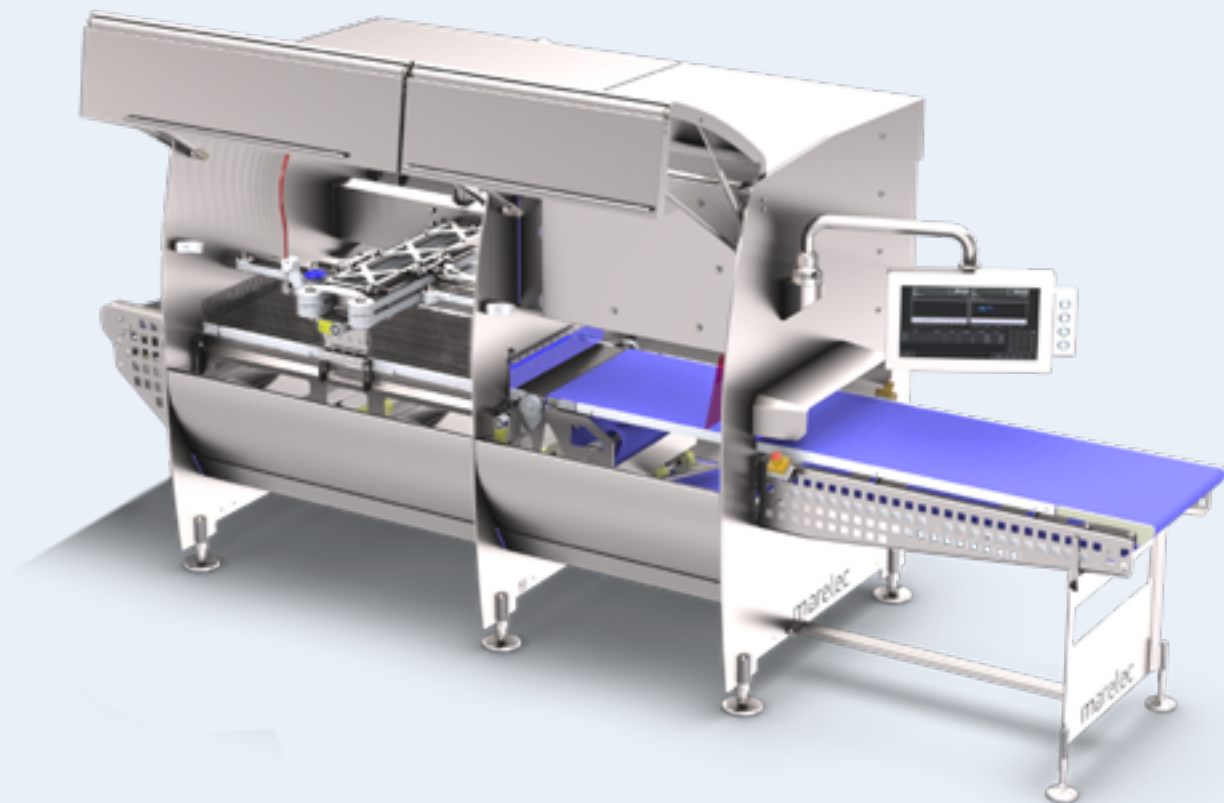
PORTIO JET

The PORTIO JET has been developed to maximize yield when cutting fish fillets, enabling a rapid return on investment through the creation of higher-value products. Cutting in two dimensions, offers greater flexibility, resulting in a larger yield than cutting with a 1D cutting machine enables.

There is a list of pre-determined cutting patterns programmed, from which parameters such as weight and size of the portions can be adapted. There is also a mode where you can draw the cutting pattern on a scanned product to define specs.

Over 300 programs can be stored with a customized name, making it possible to switch cutting patterns within seconds. It's also possible to load multiple streams of products on the 660mm/26inch wide belt and work with multiple applications simultaneously.

Typical applications include cutting salmon filets into fixed-weight loin portions, belly trim and tail sections. By-products can be cut into strips and cubes, and whitefish fillets can be portioned into several fixed-weight portions.



The assembly of our PORTIO JET series is modular, starting with a module in which all electronics, scanning and HMI, etc, are integrated. As standard this base unit is attached to a module with two cutting stations - a combination known as PORTIO JET 2.


This standard unit can be extended with additional modules of two high-pressure waterjet nozzles, up to eight stations in total. Thanks to the modular design, these extra stations can be added whenever your volumes require it.

The MATRIX J software collects all production data from the PORTIO JET, enabling it to generate production reports per shift or program and to trace changes at a machine level. MATRIX J software enables users to remotely create programs offline and monitor the machine status through an event log.

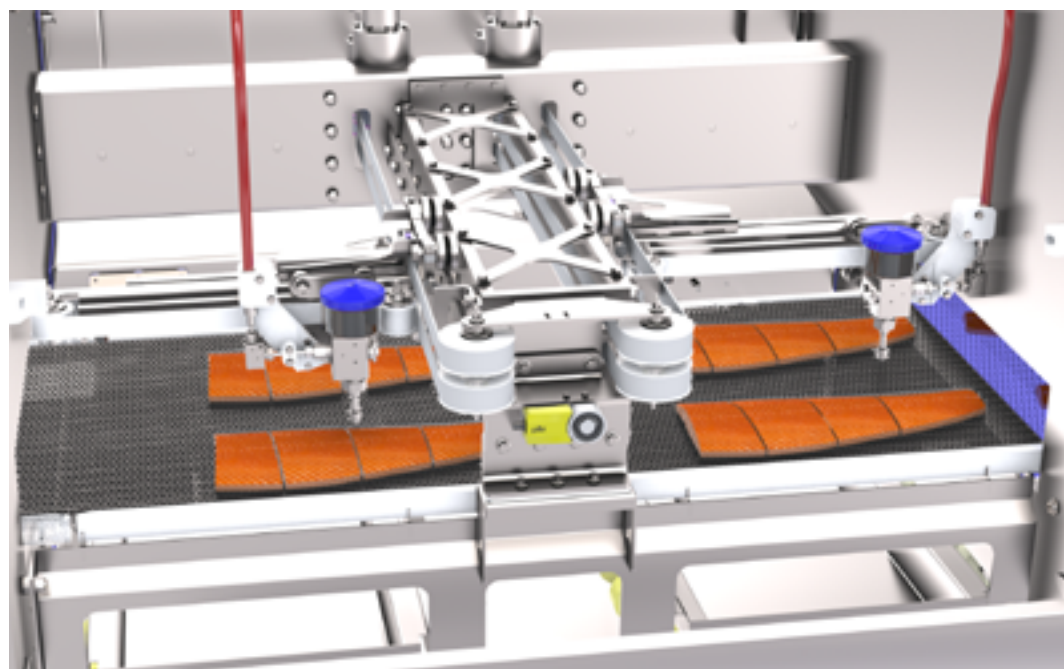


Overview

Applications & capacities

			PORTIO JET 2	PORTIO JET 4	PORTIO JET 6	PORTIO JET 8
Product	Raw material	Application	Capacity			
	Fillets ≈ 1,5 kg/3,3lb	Head trim	> 2000 kg/hour > 4409 lb/hour	> 4000 kg/hour > 8818 lb/hour	> 6000 kg/hour > 13227 lb/hour	> 8000 kg/hour > 17636 lb/hour
		Tail trim				
		Belly trim				
		Fixed portions				
	Fillets ≈ 1,25kg/275,5lb	Fixed portions	> 2000 kg/hour > 4409 lb/hour	> 4000 kg/hour > 8818 lb/hour	> 6000 kg/hour > 13227 lb/hour	> 8000 kg/hour > 17636 lb/hour

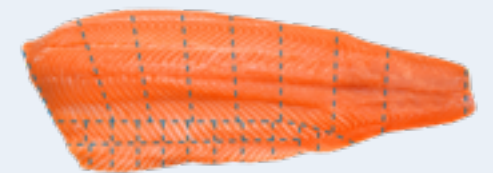
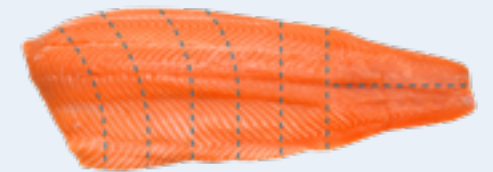
Specifications depend on product characteristics. Contact our sales team to find out the yield and capacity for your application.



Scan to see the machine in action

Cutting patterns

Salmon Portions

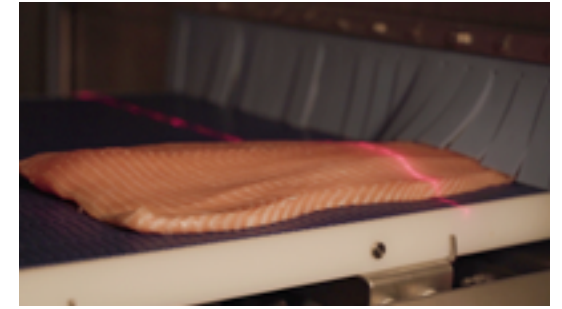
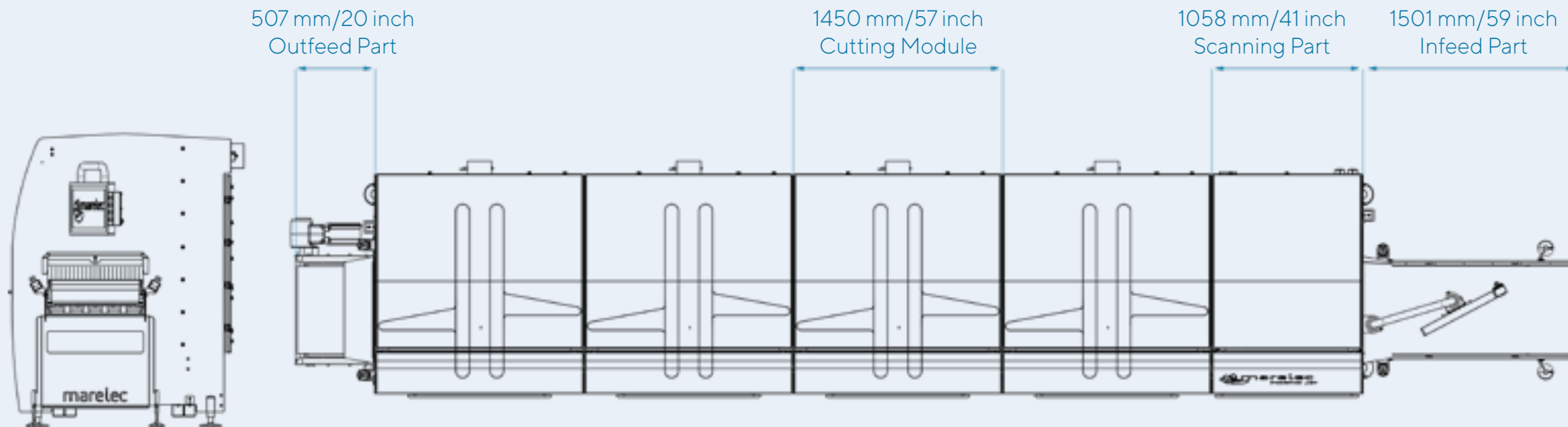


Specifications

	PORTIO JET 2	PORTIO JET 4	PORTIO JET 6	PORTIO JET 8
L x W x H	4550 x 1657 x 2031 mm / 179 x 65 x 80 inch	6000 x 1657 x 2031 mm / 236 x 65 x 80 inch	7450 x 1657 x 2031 mm / 293 x 65 x 80 inch	8900 x 1657 x 2031 mm / 350 x 65 x 80 inch
Net weight	1500 kg/3306 lb	2000 kg/4409 lb	2500 kg/5511 lb	3000 kg/6613 lb
Belt width	660 mm / 26 inch			
Cutting stations	2	4	6	8
Belt speed	50 - 450 mm/s			
Power plug	3 x 400 VAC + N + PE 63A	3 x 400 VAC + N + PE 63A	3 x 400 VAC + N + PE 125A	3 x 400 VAC + N + PE 125A
Power*	40 kW	40 kW	40 kW	40 kW
Water consumption*	200 liter/53 gallons per hour	400 liter/106 gallons per hour	600 liter/158 gallons per hour	800 liter/211 gallons per hour
Maximum pressure	standard: 3800 bar optional: 6000 bar			
User-definable programs**	299			

* Depends on diameter of chosen nozzles. Contact our sales team to find out the power and water consumption for your application.

** Available programs can be expanded upon request.





MARELEC Food Technologies

Redanweg 15 - 8620 Nieuwpoort - Belgium - T +32 58 222 111 - sales@marelec.com



MARELEC IS A MEMBER OF THE DURAVANT FAMILY OF COMPANIES

PACKAGING SOLUTIONS | FOOD PROCESSING SOLUTIONS | MATERIAL HANDLING SOLUTIONS

www.duravant.com